

the basics of color management



basI C C o l o r RAY

... HIGH-END MONITOR GRAYSCALE CALIBRATION!

d a t a s h e e t - b a s I C C o l o r R A Y

basI C C o l o r GmbH
Falkenstraße 15 a
D-82377 Penzberg
Tel.: +49-(0) 88 56/93 25 05
info@basI C C o l o r.de

b a s I C C o l o r
... because it simply works!

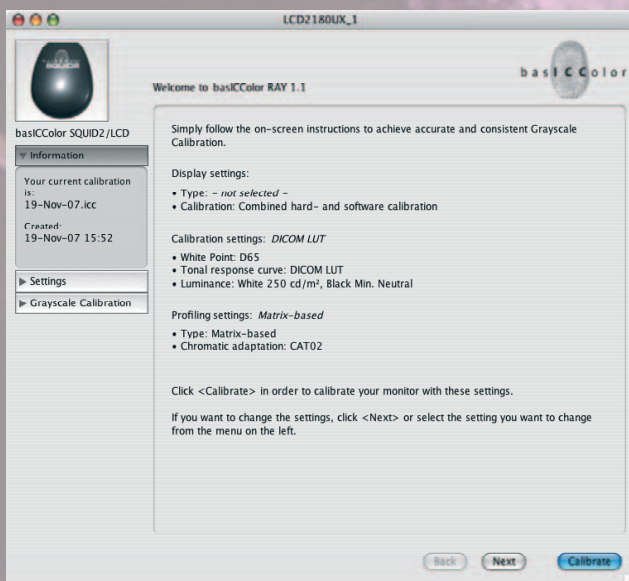
www.basI C C o l o r.de



... because it simply works!

RAY

Don't trust your monitor ...
... calibrate it!





With basICColor RAY you will get the best possible display quality for your radiological workstation. Calibration is necessary because the sensitivity of the human visual system to brightness differences varies from dark to bright levels. The basICColor RAY grayscale calibration addresses this by adjusting the resulting brightness of monitor pixels according to the pixel values of the radiological image. Beside that the basICColor RAY software equalizes the color of the gray to a homogenous, noncolor display result.

The two different standard display functions which are provided by the DICOM standard and the Commission Internationale de l'Eclairage (CIE) are offered via predefined settings for easier handling and faster success in grayscale calibrating the monitor. basICColor RAY supports many different colorimeters and spectrophotometer for the automatic grayscale calibration and different monitors will be supported for hardware adjustment, e.g. Apple Cinema Display.

Features:

- ▶ Software for grayscale calibrating of monitors
- ▶ fully automatic hardware adjustment for suited monitors (e.g. Apple Cinema Display)
- ▶ visually linear CIE LUT calibration
- ▶ CIE LUT calibration
- ▶ ease of use with predefined calibration settings (CIE LUT - 250 cd/m², CIE LUT - max. luminance, DICOM LUT - 250 cd/m², DICOM LUT - max. luminance)
- ▶ supports all instruments of adequate quality (colorimeter and spectrophotometer)
- ▶ calibration protocol
- ▶ grayscale calibration of multiple monitors

System Requirements (minimum):

- | | |
|---|---|
| 
Mac OS X 10.3.9 | 
Windows® 2000 with SP3 or
Windows® XP |
| Color monitor (Res. 1024 x 768), Video card 24 bit | |

Products, Bundles and Options:

Technical Support Agreement (TSA)

provides 12 months of e-mail and telephone support at basICCare Center, and free product updates (for any number of seats).

Please refer to the price list on www.basICColor.de

All published specifications and services are provided "As Is" without warranty of any kind and subject to change without notice.
Please ask for volume and educational discounts!

basICColor GmbH

Falkenstraße 15 a
D-82377 Penzberg
Tel.: +49-(0)88 56/93 25 05
info@basICColor.de
www.basICColor.de