



Contents:

- **Software Download Simplified..... 2**
- **Software Licensing Optimized 3**
- **New Version Of baslCColor display 5..... 5**

Current Versions

input	3.1.2
display 5	5.1.1
print 3	3.1.0
dropRGB	2.0.0
CMYKick	2.0.0
Devil	1.3.0
demon	1.1.3
dragLINK	1.1.0
LINKflow	1.0.0
catch	4.1.1
IMProve	1.0.0
MatchPatch	2.0.0
spoTTuner	2.0.0
control	4.1.1
certify	4.1.1
statistics	4.1.1
gHOST	2.0.2
Print Production Server	6.4.5
profile genie	1.0.0



www.basiccolor.de

**The baslCColor Website Has Been Overhauled And Improved.
Downloading baslCColor Software Is Much Easier Now!
NEW: FAQs**

The most important improvement first: Most baslCColor software products can now be downloaded directly from the respective product page – selectively for Mac OS X or Windows (baslCColor display in our example to the right). One click on the corresponding button will do! No registration, no more searching the download library.

We have collected the frequently asked questions for the different products – and the correct answers, of course – and published them on our new FAQ pages. With one click on the <FAQs> button you get directly to the FAQ collection for the selected product. If this doesn't answer your specific question, our support engineer is happy to assist.

For some of the products, videos are available (baslCColor print in our example to the right). The videos are only one click away, directly from the product page.

If you like our new website you can let us know via a „Like“ on our Facebook page. The link can also be found in the header of www.basiccolor.de.



Software Licensing

All Newly Published Software Programs And All Updates Of basICColor Software Will Be Fitted With A New, Improved Licensing Scheme!

Software licensing is now completely integrated into the product. Requesting a license, downloading the license and installing it in the software are being done directly from the application – no more need to use an internet browser.

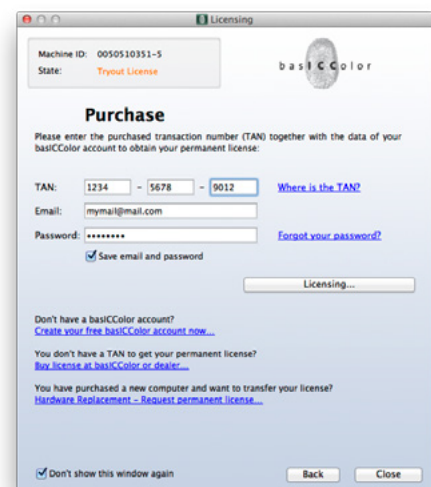
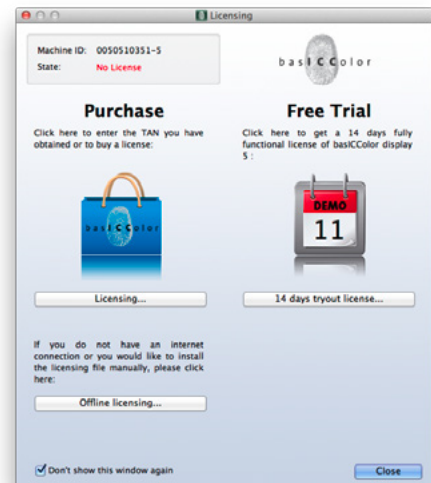
The license status is being displayed in the licensing window that can be accessed from the „Help“ menu.

No License: The software will launch but its functionality is limited, e.g. basICColor display will not measure a monitor or light source.

If you click the <14-days-tryout license...> button you will be connected with the basICColor licensing server. You need to be registered here. If you have logged in once, the application – and all other basIC-Color programs using the new licensing scheme – will remember your log-in information if you check the „Save email and password“ checkbox.

The license status information will change to „Tryout license“ and you will be able to test the complete functionality of the software for 14 days.

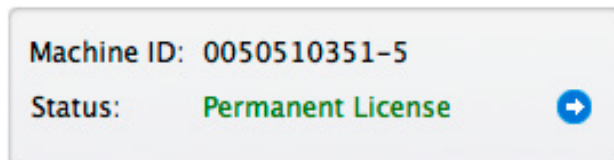
The remaining tryout time in days will be displayed on the „DEMO“ calendar.



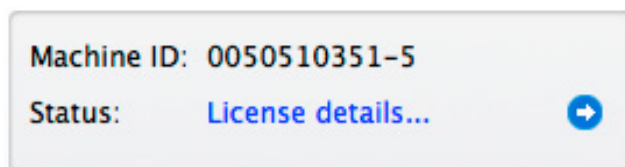


When you buy the software after a successful test period and you receive a TAN (TransActionNumber) you just open the licensing window again, copy and paste the TAN into the „TAN“ box and press the <Licensing...> button. The license will be downloaded automatically. It will be installed on your computer so that all users who log in on this machine can use the software.

The status will change to:

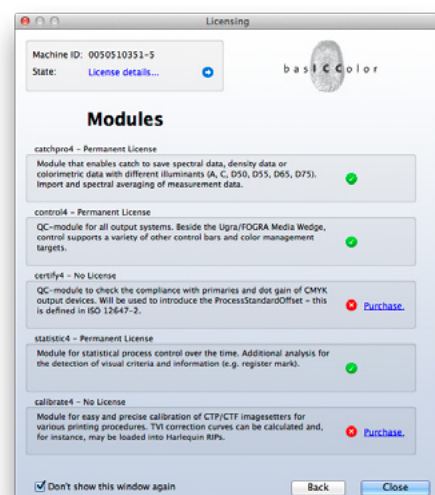
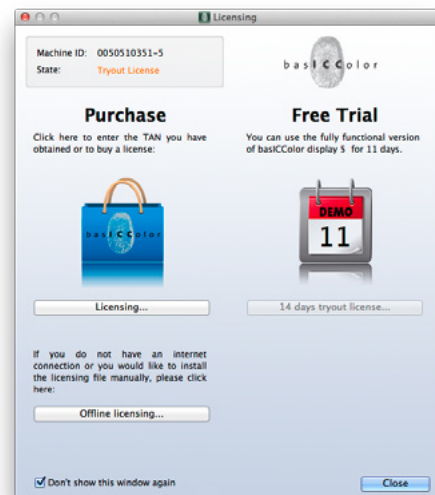


If a software should contain several modules which can be licensed separately (basICColor catch in our example), but not all modules are licensed, the status looks like this:



A click on the blue arrow opens the detail window. Here you get an overview of all available modules and their licensing status.

All licenses purchased will be stored on the basICColor licensing server and can be downloaded at any time.

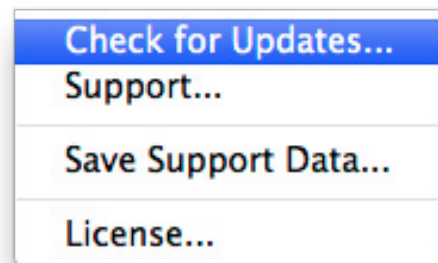




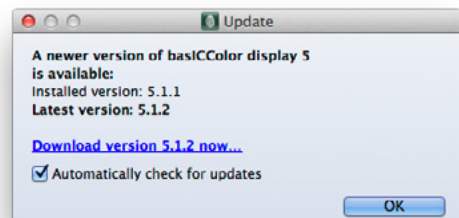
baslCColor display 5.1

New Version Of baslCColor display 5 Released – Hardware Calibration For More Monitor Models

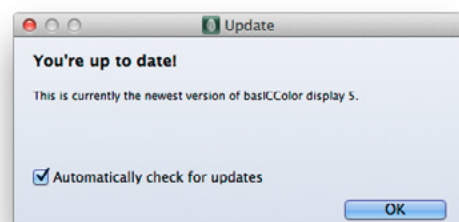
A bit over one year after the first release of baslCColor display 5 the software received a facelift. The most obvious modifications pertain to the licensing scheme that was described on the previous pages. Yet, we suppressed one important detail there: The automatic Updater. You can find it in the „Help“ menu under „Check for Updates...“.



If you select this menu item you open the „Update“ window. At the same time the software has checked if there is a newer version. If so, this version will not be installed automatically, you can decide if you want to use the new version or stick with the one you have. Yet, one click on the link downloads the new version.



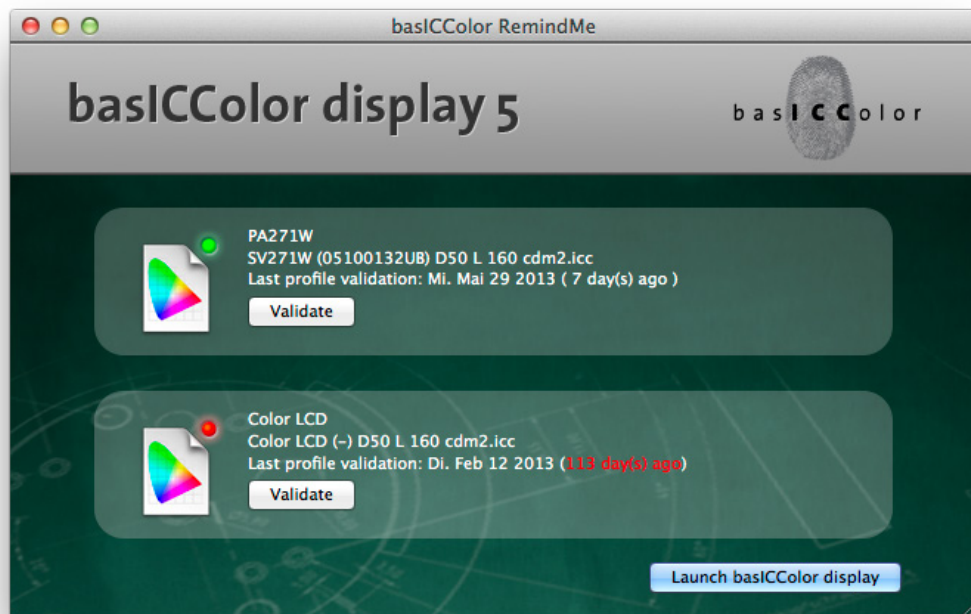
If, in future, you want to have this check performed automatically just activate the checkbox „Automatically check for Updates...“. In the case that a newer version is available, you will be notified. Else, the software starts as usual.



For this service it is mandatory that your computer is connected with the internet.



Another important new feature is RemindMe, a little utility that reminds you of the next due-date for calibrating and profiling your monitor.

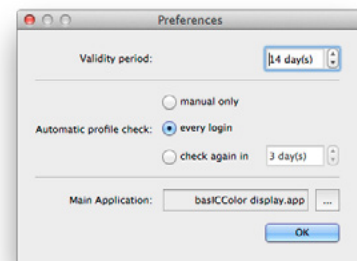


A red or green traffic light shows for each monitor connected with your computer if validation or calibration is due or over-due. Additionally you can see the date of the last validation. In our example the main monitor was last validated on May 29th and the interval for re-calibrating has not expired yet. The second monitor has exceeded the interval by 113 days and thus shows a red traffic light.

How does RemindMe know in which intervals your monitor needs to be calibrated?

You can define the intervals yourself. Open the „Preferences“ window and set the „Validity period“ and the checking intervals.

If you should have moved the basICColor display application from its original install folder you can re-set the path to basICColor display here. That allows to start validation or calibration right from RemindMe.





More Improvements And Changes In basICColor display 5.1

- Connection with Spyder 4 is more reliable.
- Connection with X-Rite i1 Display Pro/basICColor SQUID3 is more stable.
- NEC SpectraView 232 is hardware calibratable.
- EIZO CG246 and CG276 are hardware calibratable.
- With certain NEC and EIZO monitors basICColor display can emulate any color space via 3D-LUTs. As opposed to other similar solutions, basICColor display works on the basis of the current monitor calibration and ICC profiles for the emulation. This guarantees that the emulated color space is mapped perfectly to the monitor space – as long as it lies within the monitor gamut, of course.

What do you need color space emulation for?

Not all applications are color managed, some just follow a defined standard, like video applications based on Rec. 709 color space. On a modern wide gamut monitor these colors look over-saturated. Special video monitors with a native Rec. 709 gamut are pretty expensive and suited for video only. basICColor display 5.1 makes wide gamut monitors which come with 3D-LUTs perfectly suitable for many non-color-managed applications.

Profiles for different video standards can be downloaded from www.colormangement.org for free.



basICColor
the basICCs of colormangement *impressum*

basICColor GmbH
Maistraße 18
82377 Penzberg - Deutschland

Geschäftsführer : Karl Koch
Sitz der Gesellschaft: Penzberg
Amtsgericht München, HRB 172485
UST.ID-Nr. DE814946213

Tel.: +49 - (0) - 88 56 - 93 25 05
Fax: +49 - (0) - 88 56 - 93 25 03